

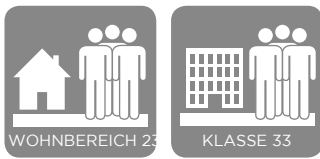


CLICKABLE CEMENT TILE(CCT)

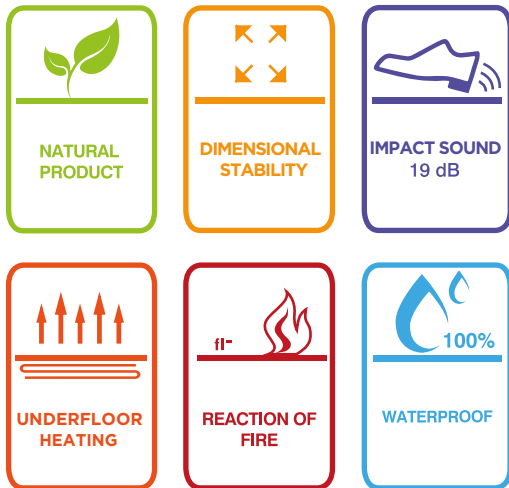
SQM by LICO CCT patented Rigid Cement Core Board (RCCB) technology provides the flooring industry the very first clickable floating floor tile.

Micodur's ground-breaking technology delivers a floor that combines the durability and stability of ceramic tiles with the groutless, click-down installation of a floating floor. This natural, 100% organic, PVC-free floor is the perfect combination of cement, minerals and cellulose fibers which provides extreme density and dimensional stability.

Classification



Advantages



CCT : 7.5mm

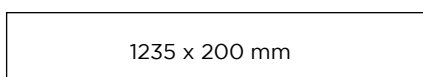
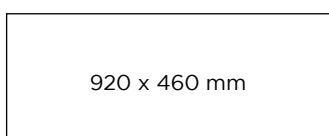


Fulfill the requirements of Gold Blue Angel and Green Guard Gold

Further advantages

- No expansion and separation fugue
- Absolutely dimensionally stable
- Anti-slip
- Warm to the touch
- Suitable for allergies
- Lightfast 7 / 8
- Natural product
- Designs at infinitum
- Free of harmful substances
- Anti-static

Dimensions



Certificates

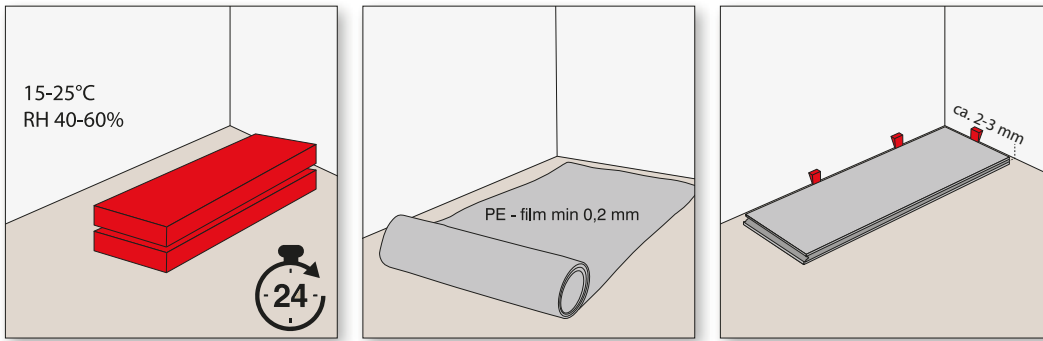
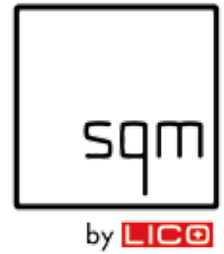


www.blauer-engel.de/UZ120

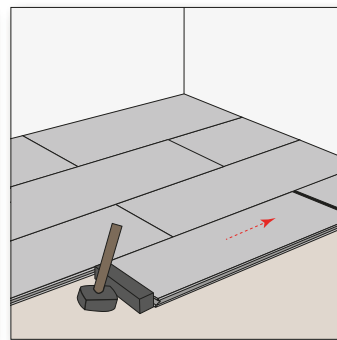
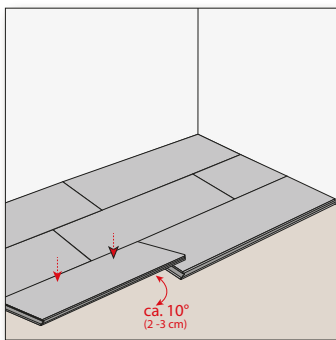
LM - 4200

CLICKABLE CEMENT TILE (CCT)

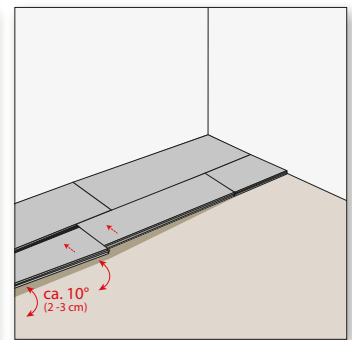
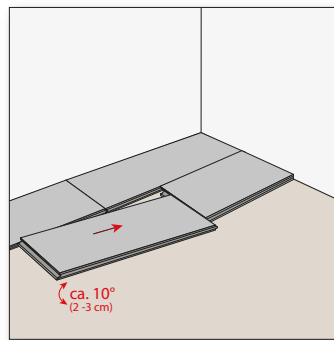
Installation and maintenance instructions



Angle Snap version 1



Angle to Angle version 2



BEFORE INSTALLATION

CCT is laid floating on a clean, dry, level, as well as tensile and pressure-resistant substrate (DIN18356). The maximum permissible unevenness of the subfloor must not exceed 2 mm to 1 m length, otherwise it must be leveled with filler. CCT is also suitable for full surface bonding with a recommended water-free adhesive from your adhesive supplier (e.g., „Kleiberit 583.6“). When using a pallet truck or similar up to 1000 kg total load the floor must be glued in addition at the click connection (D3 glue).

Before installation, CCT should be acclimatised at a room temperature of 15-25° C and a relative humidity of approx. 40-60%, 24h in the closed, plain bearing package. A PE foil is recommended, the subfloor has to comply with the humidity standard, i.e. max. 2,0% CM for cement subfloor and max. 0,5% CM for anhydrite subfloor. CCT can also be installed on hot water and electric floor heating. For application in the wet area, where there is danger of standing water or flooding, it is imperative to use a so-called jointing compound (for example „Clic Seal“ or „Seal & Clic“). It must be avoided that moisture or constant moisture can act on the back of the floor. The boards should be checked for their perfect condition at daylight, any defects must be complained before the laying. Please also check that the tongues and grooves are free from chips or other particles. Differences in color and structure can occur due to the properties of the material and underline the authenticity of this natural product.

INSTALLATION

CCT can be installed with two standard variants: Angle Snap (variant 1) or Angle to Angle (variant 2). Start laying in a corner of the room and consider dilatation joints of 2-3 mm against the wall and every other solid construction element. Even larger surfaces can be laid without a separation/ dilatation joint. Attention! Construction separation/ dilatation joints must be considered.

Angle Snap version 1

Set the long side of the planks at a slight angle to approx. 10° / 2-3 cm and click them by pushing on and pressing down. On the front side, the panels are clicked by a tapping block by gently tapping. Always place the tapping block (at least 20 cm long) against the spring (tongue) or the lower cheek, never at the „good edge“.

Angle to Angle version 2

Slightly raise the panels to the end face by approx. 10° / 2-3 cm and then click on the next panel also on the end face. Subsequently lift the panels and the adjacent ones which is already clicked, lightly, on max 10° / 2-3 cm and slide respectively click the panels together. Lay the following panels in the direct extension of the first. The remainder of the first row is the first panel of the second row. It should be at least 30 cm long. For cutting the panels, a hand circular saw or laminate punch is recommended. It is also possible to cut the line on the surface with a cutter knife and „buckle“ the plate.

CLEANING AND CARE

The floor can be dampened but also wet cleaned, also the use of brush wet cleaning machines is possible. After the first cleaning of the newly laid flooring, it is recommended to mop the surface. Waste of CCT can be disposed as construction waste and fully recycled.

CLICKABLE CEMENT TILE (CCT)



by LICO



201025

Finnish Oak



201229

Larch Zermatt



200609

Sessile Oak Creme



200611

Oak Craggy



200754

Oak Sierra



201226

Oak Vita



201016

Oak Olive Flamed



201225

Oak Light



201024

Gold Oak



200970

Oak Steel



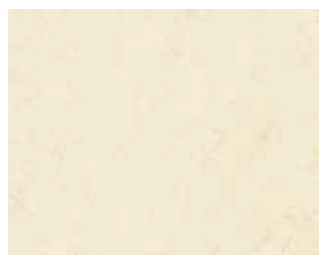
201231

Concrete Creme White



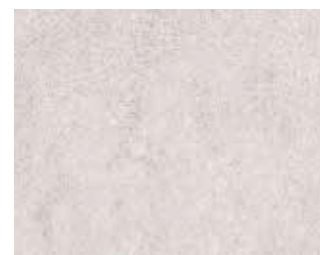
201021

Structural Concrete White



200087

Punti



201020

Concrete Silver



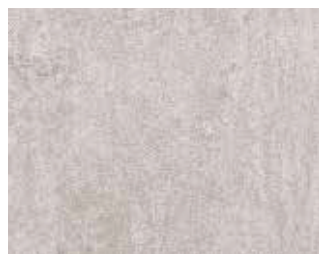
221027

Ferroconcrete



201023

Eco Concrete



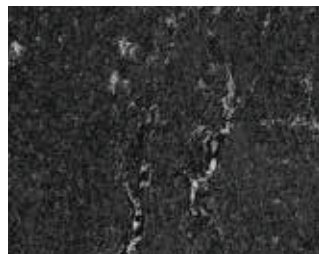
201019

Concrete Chrome



201018

Concrete Terra



221059

Porto Branco



201233

Cement Iron



201223

Stone Retro

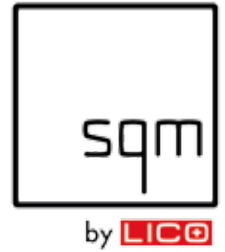


201236

Stone Ornament

CLICKABLE CEMENT TILE (CCT)

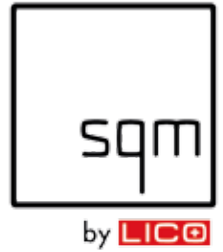
Comparison Table



	Flooring Certifications	SQM by LICO	Other Brands	Other Brands
	Product Line	CCT	Traditional Tile	WPC (Wood Plastic Composite)
Composition	Manufacturing Process	Patented Cement Board Core, Digitally Printed with Hot Coating Wear Shield	Clay Tiles, Glazed and Hot Kiln Baked	LVT Glued & Hot Pressed on WPC Core
	Material Composition	100% Organic	100% Organic	PVC-Based
	Comfort Core Walking & Warmth Technology	Yes	No	No
	Underlayment	Waterproof & 100% Anti-Microbial	No	Water-Resistant Cork (Can Harbor Mold)
Performance	Guaranteed Not to Delaminate	Yes	Yes	No
	Density, Rigidity & Impact Resistance	400% Higher	500% Higher	Average Value*
	Curling & Cupping Risk	40x Less	None	Average Value*
	Thermal Expansion	100% Expansion-Free	100% Expansion-Free	Average Value*
	Fire Resistance	High	High	Moderate
	Flex Core Technology	Yes	No	No
	Click Connection-Tongue Strength	10x Stronger	N/A	Average Value*
Applications	Install over existing Tile Floors	Yes	Yes	Yes
	Clickable Installation	Yes	No	Yes
	Floating Floor	Yes	No	Yes
	Removable w/o Demolition	Yes	No	Yes
	Wood Plank Sizes	Yes	Yes	Yes
	Tile Sizes	Yes	Yes	No
Certifications	Green Guard	Yes	Yes	Yes
	Wear & Abrasion Resistance	Class AC5-Highest Rating	Class AC5-Highest Rating	Heavy Commercial
	Emissions	Lowest in the Industry	Standard	High
	Warranty	Lifetime	Lifetime	15-30 Year
	Noise Reduction	19dB	*Minimal	18dB

CLICKABLE CEMENT TILE (CCT)

Job Reference



SQM by LICO Clickable Cement Tile (CCT) **The natural phenomenon**

CCT is the successful combination of a perfectly stable mineral core board and the optical design variety of the newest digital printing technology.

Coupled with the properties of the KORUS surface technology, CCT is suitable for almost every area. From the living area to highly frequented commercial Areas - CCT is the alternative to plastic or wood based flooring and always in perfect harmony with nature. The remarkable technical features are totally convincing.

Reference Address



Google Headquarter
Via Federico Confalonieri,4,
20124 Milano MI, Italy
2018





LICO AG
Palu Daint
CH-7537 Müstair
Müstair, Switzerland
40 m2 Office
October 2017



Onlinestore
Moosweg, 15,
39020 Kastelbell
Bolzano, Italy
780 m2 Open Plan Office
July 2016



Bakery Breitner
Frauenstrasse 30
85276 Pfaffenhofen
Germany
180 m2 Sales and Production Area
March 2017



Torino Airport
Strada Aeroporto, 12
10072 Caselle Torinese TO Italy
1,700 m2 Check-in and Shops
November 2016



Hotel Gruberhof
Main street 25
39024 Malles Venosta
Bolzano, Italy
180 m2 Wellness and Sauna Area
October 2017



Hans im Glück - Burgerkette
Sun Street 24-26
80331 Munich
Germany
240 m2 May 2017
plus another 3 stores 2017
Opening February 2018
240 m2 Bern - Gümlingenfeld

CLICKABLE CEMENT TILE (CCT)

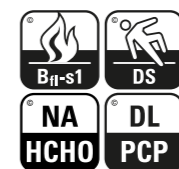
Technical Data Sheet



	Masse & Gesamtdicke / dimensions & thickness / 尺寸和厚度	EN 427 & EN 428	ca. 920 x 460 x 7,5 mm ca. 1235 x 200 x 7,5 mm
	Klassifikation / classification / 类别	EN 16511	Objektbereich 33 Commercial 33 商用33
	Flächengewicht / total weight / 重量	EN 430	ca. 12 000 g/m ²
	Trittschallverbesserungsmass / impact sound reduction / 降噪性	EN ISO 717-2	ca. 19 dB
	Stuhlrolleneignung / effect of castor chair / 抗椅轮耐磨损性	EN 425	erfüllt fulfil 达标
	Raumschallverbesserung / room sound improvement / 噪声改善度	IHD-W-31	35%
	Brandverhalten / reaction of fire / 防火性能	EN ISO 9239-1	Bfl s1
	Masstabilität / dimensional stability / 尺寸稳定性	EN 434	< 0,01 %
	Wärmedurchgangswiderstand / thermal resistance / 隔热保温性	EN 12524	ca. 0,05 m ² K/W
	Resteindruck / residual indentation / 压痕残余度 (抗压性)	EN 433	0,00 mm
	Aufladungsspannung / reaction to static electricity / 抗静电性	EN 1815	< 2,0 kV antistatisch < 2,0 kV antistatic 抗静电
	Lichtechtheit / lightfast / 光照色牢度	ISO 105	7 / 8
	Koeffizient Rutschhemmung / coefficient of friction / 防滑等级	EN 51130	R 10
	Chemikalieneinwirkung / resistance to chemicals / 抗化学性能	EN 423	sehr gut Beständigkeit very good resistance 非常好的抵抗力
	Emissionswerte / emissions value / 挥发性有机物质排放量		< 100 ppm 根据AgBB laut AgBB
	Dickenquellung 24h / Swellness value 24h / 24小时浸泡后膨胀厚度	EN 317	0 %
	Querzugwerte Klickverbindung / locking strenght / 装配板锁紧强度	ISO 24334	> 500 kg/lfm - kg/m
	Abriebverhalten / abrasion resistance / 耐磨性	EN 14354 EN 13329	>10 000 WR4 AC5
	Mikrokratzenbeständigkeit / micro scratch resistance / 耐刮擦性	EN 16094	MSR-A1/MSR-B1
	Möbelfussverschiebung / effect of a furniture leg / 家具腿抗刮性能	EN 424	keine sichtbaren Schäden no damage shall be visible 无可见损伤
	Fleckenunempfindlichkeit / stain resistance / 耐污性	EN 438-2	Grad 5 / 5
	Rutschfestigkeit / slip resistance / 防滑性能	EN 13893	Klasse DS DS类



Erfüllt die Anforderungen vom Green Guard Gold
Fulfill the requirements of Green Guard Gold
符合Green Guard Gold的要求



www.blauer-engel.de/UZ120

The details given above may be subject to change for the benefit of further improvements.

The displayed floor designs might be slightly different to the original.
www.lico.ch | 03.2018 LICO保留进行技术变更或改进的权利。
图片所示的地板设计可能与实物略有不同。



by LICO

LONG TERM STABILITY

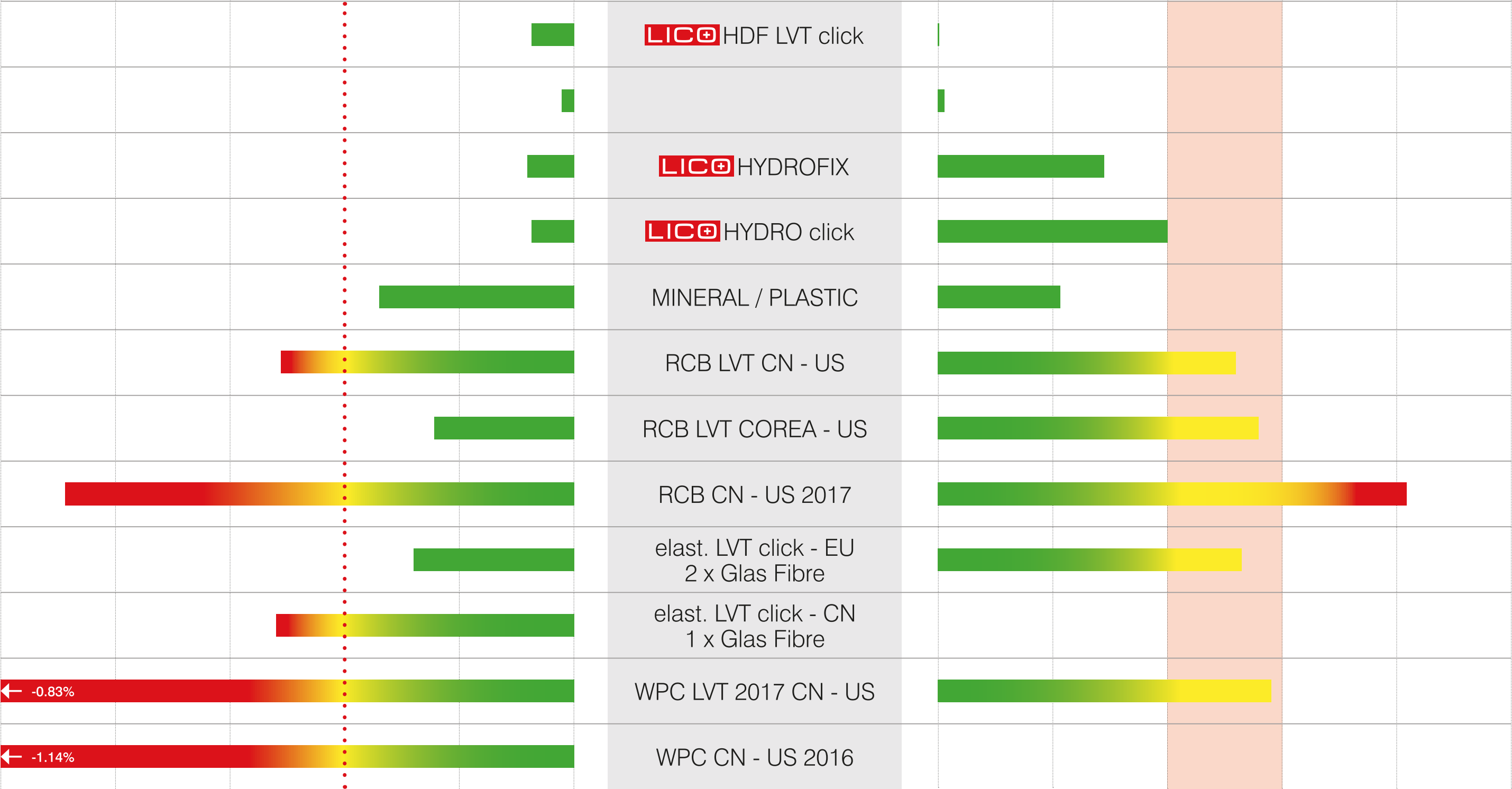
EN-434 23° C - 6h / 80° C - 24h / 23° C

shrinking

HOT-SPOT = 20° - 60° C

elongation

-0.30% -0.25% -0.20% -0.15% -0.10% 0% 0% 0.10% 0.15% 0.20% 0.25% 0.30%



••• Grenzwert - EN Norm 16511

planned limit value - EN standard 16511

RCB= Rigid Core Board (similar system / Hydro-Hydrofix) / WPC= Water Proof Core Board (usual yellow / creme board)